

Technical Specifications:	
Voltage:	10-30V
Average consumption:	0.3 Amps each LED modules (12V)
	10V 30V
	SMLED 6/8: 2.6 Amp 1.3 Amp SMLED 6/8 KS: 2.6 Amp 1.3 Amp SMLED 8/11 CB: 1.8 Amp 1.3 Amp
Dimensions:	6-modules: 800 x 32 x 68 mm   8-CB modules: 800 x 32 x 68 mm
	8-modules: 1070 x 32 x 68 mm   11-CB modules: 1070 x 32 x 68 mm
Weight:	6-modules: 705 gr 8/11-modules: 940/995 gr

## HOW TO ORDER:

Choose references from below:

### Analogical SignalMaster

- 2010560 Directional lighting system, (6) Solaris LED modules, roof connector, amber, multivoltage
- 2010561 Directional lighting system, (8) Solaris LED modules, roof connector, amber, multivoltage  
*Installation accesories*
- 82441451 Analogical SMLED wiring, roof connector, 5M
- 82441445 Analogical SMLED wiring, roof connector, 10M
- 2010601 Directional lighting system, (6) Solaris LED modules, 15M wiring harness included, amber, multivoltage <sup>(1)</sup>
- 2010602 Directional lighting system, (8) Solaris LED modules, 15M wiring harness included, amber, multivoltage <sup>(1)</sup>

### Control Heads for analogical SignalMaster

- ICS2009ST-12 Control system with 4 more outputs fully protected against polarity reversal, overloading and short-circuits. Control head with 9 backlight keys included, 12/24V.

### KS SignalMaster

- 2010562 Directional lighting system, (6) Solaris LED modules, KS control head, 20cm wiring harness included, waterproof connector, amber, multivoltage
- 2010563 Directional lighting system, (8) Solaris LED modules, KS control head, 20cm wiring harness included, waterproof connector, amber, multivoltage  
*Installation accesories*
- 82441446 SMLED KS/CB wiring, wiring harness, 5M
- 82441447 SMLED KS/CB wiring, wiring harness, 10M
- 82441476 SMLED KS/CB wiring, wiring harness, 15M
- 2010568 Directional lighting system, (6) Solaris LED modules, KS control head, roof connector, amber, multivoltage
- 2010569 Directional lighting system, (8) Solaris LED modules, KS control head, roof connector, amber, multivoltage  
*Installation accesories*
- 82441453 SMLED KS wiring, roof connector, 10M

### CANBUS SignalMaster <sup>(2)</sup>

- 2010564 Directional lighting system, (8) continuous LED mode, CAN BUS, amber, multivoltage
- 2010565 Directional lighting system, (11) continuous LED mode, CAN BUS, amber, multivoltage  
*Installation accesories*
- 82441446 SMLED KS/CB wiring, wiring harness, 5M
- 82441447 SMLED KS/CB wiring, wiring harness, 10M
- 82441476 SMLED KS/CB wiring, wiring harness, 15M

<sup>(1)</sup> Without waterproof connector.

<sup>(2)</sup> CANBUS SignalMaster must be controlled with a CANBUS control head BCT2000 or BCT500CB.

### Accessory

- 8234188 Kit Silent Blocks SMLED SL Solaris

**NOTE:** All the models must be acquired by its correspondent wiring connection (except 2010601 and 2010602 references).

# SIGNALMASTER SOLARIS





## Directional warning lights



# SIGNALMASTER SOLARIS



Federal Signal Vama presents the new **ultra-low profile SignalMaster Solaris** directional warning light. It offers an excellent results as an emergency light, thanks to its several flash patterns **with different functions (day / night effect, fast / slow, scroll)** to satisfy all needs. Its main features are:

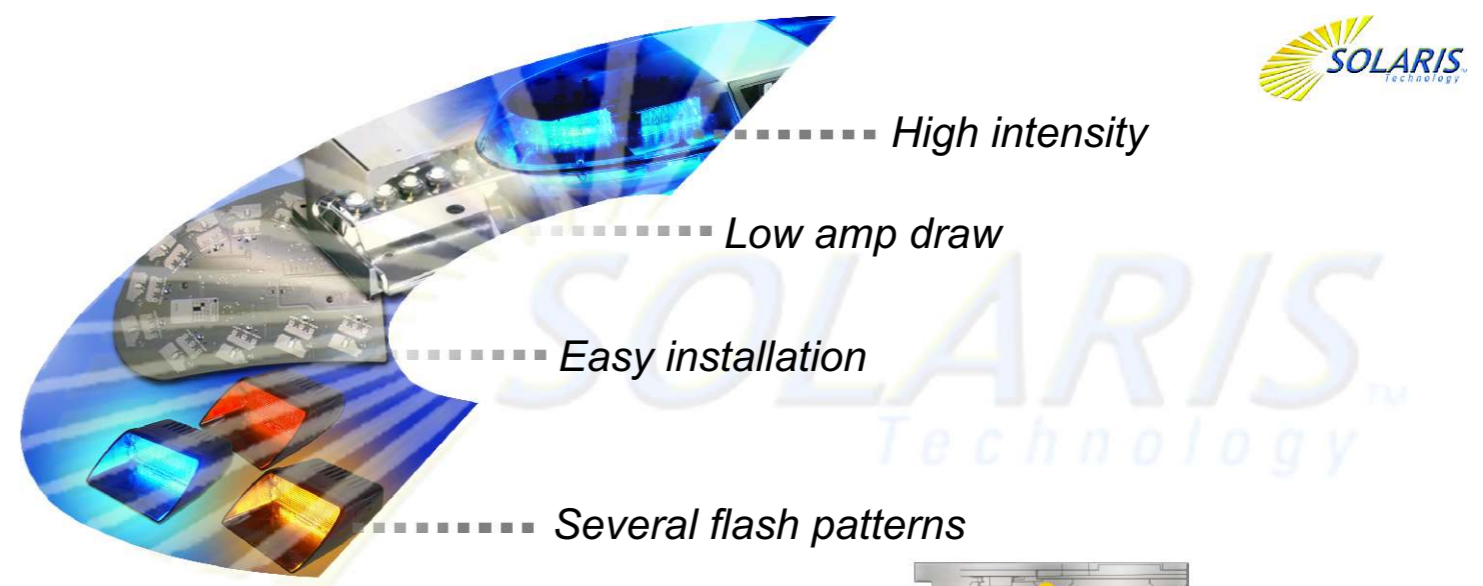
-  **HIGH INTENSITY.** The built-in Solaris technology onto SignalMaster directional warning light has exponentially increased light intensity compared to similar products on the market.
-  **EVERY NEED SOLUTIONS.** SignalMaster Solaris has got **4 different flash patterns** (right, left, centre-out sequences and middle-out flashing mode), and **day / night\***, **slow / fast\*** and **scroll function** with a non-stop effect on a CAN BUS version.
-  **ULTRA-LOW PROFILE.** Its low profile gives it less aerodynamic drag with less fuel consumption and better vehicle tire grip, for an increased security. Further more, it has an attractive design without losing any functionality and it allows easier installation in any vehicle.
-  **WATERPROOF HOUSING.** Highly prepared to fight against most adverse weather conditions, thanks to its **IP protection IPX9K.**

\* Features available on analogical version with SMC5 multifunction controller.

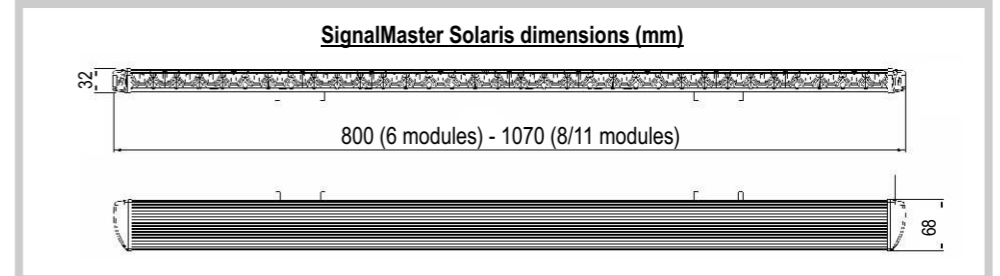
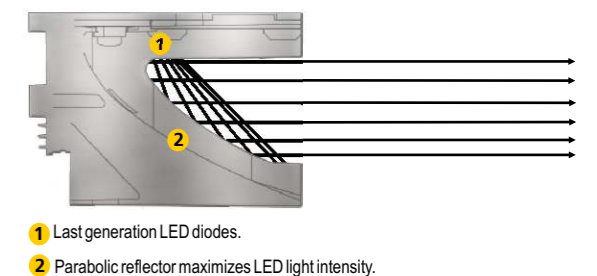
**Approvals:**  
With IP protection IPX9K.  
All models satisfy Electromagnetic Compatibility Directive 2004/104 and UNE EN 12352 Normative about traffic control equipment, warning and safety light devices.



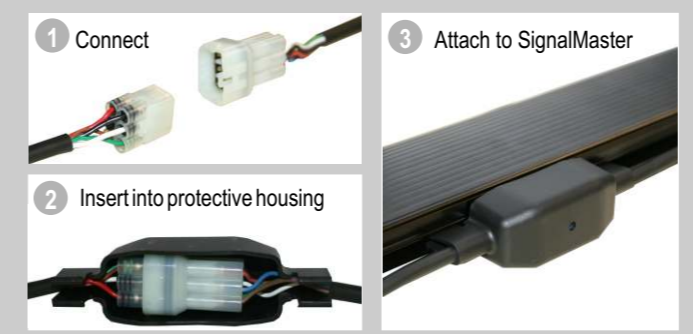
All-purpose directional warning light: fire, ambulance, services, police, etc.



Federal Signal Vama offers to his customers, the high performance and efficiency **Solaris** technology. Traditional light systems spread it in a random direction, LED **Solaris** Technology reflects a strong light beam where it is needed most, on a wide angle, avoiding dark spots.



Signalmaster Solaris versions, with wiring harness and waterproof connector provide a quick and easy connection:



**SignalMaster Solaris** special design, with its ultra-compact profile, allows an easy installation in the vehicle and provides, at the same time, excellent light results.